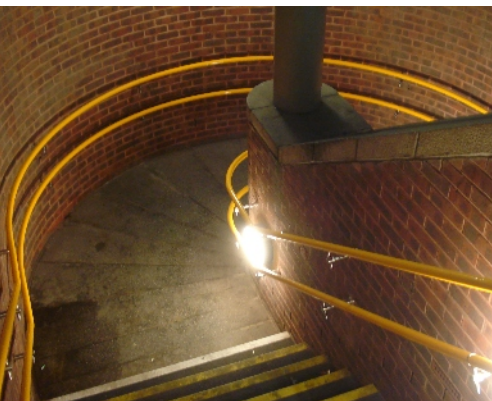
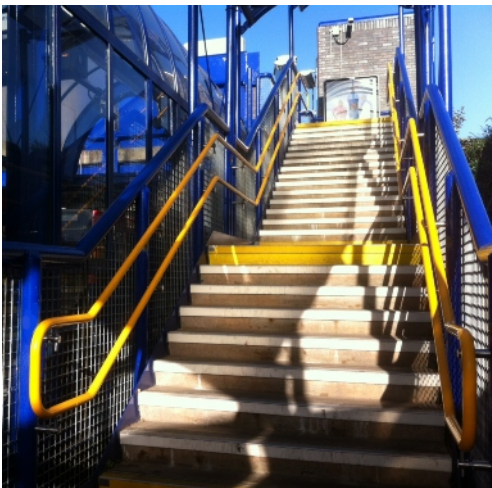


Stargard

The original PVC sleeved handrail which is
“not cold to the touch” and is UV stable



July 2016



4 mm (4,000 microns) thick PVC sleeved over galvanised steel tube after fabrication, giving a finished diameter of 42 mm or 50 mm. The double protection of galvanised tube and pvc sleeving is robust, will not chip and resists knocks and bumps



Standard colour range
(Any RAL colour is available depending on quantity required)



Railway Station Applications

DATA SHEET

www.handrailsuk.co.uk

SG System Products Ltd
22 Wharfedale Road
Ipswich
IP1 4JP

Tel: 01473 240055
Email: sales@sgsystems.co.uk
www.handrailsuk.co.uk

“A complete design, manufacture and installation service”