

www.handrailsuk.co.uk

*The original PVC “warm to the touch” -
“not cold to the touch” handrail which
is UV stable*



4mm (4,000 microns) thick PVC sleeved over galvanised steel tube after fabrication, giving 42mm or 50mm finished diameter. The double protection of galvanised tube and thick PVC sleeving is robust, will not chip and resists knocks and bumps.

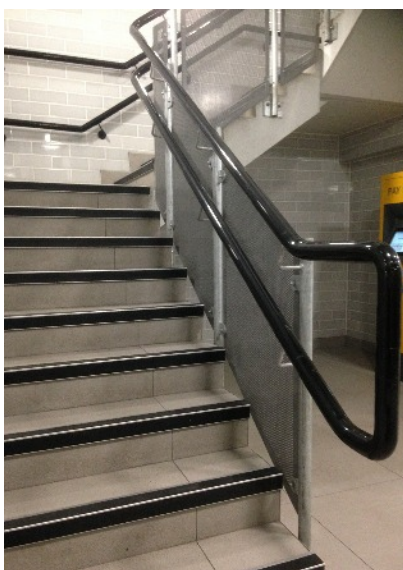
Stargard is available in a range of colours.

On site tests in cold weather have shown that Stargard handrail is generally 4 degrees Centigrade warmer than a powder coated handrail in the same location. (and cooler in hot weather).

Stargard handrail can be fitted to a range of balusters e.g. stainless steel, Stargard PVC sleeved or galvanised steel.

It can also be fitted to existing balustrade or used simply as wall handrail.

Stargard is manufactured in lengths up to 5 metres thus keeping the number of joints on site to an absolute minimum



Data Sheet
typical Stargard applications

*A complete design, manufacture
and installation service*

BPI Bespoke Project Installations Ltd.
Unit 14
Woodland Close
Clipstone
NG21 9BF

Tel: 01623 634589 / 0787 0662987
Email: sales@bespokeprojects.biz
www.handrailsuk.co.uk