

# Glassrail

CLAMPING PLATE SYSTEM

## Applications

Glassrail is not cheap, so we are looking at quality developments. From shops and shopping malls to prestige housing projects and balconies it has been found ideal, strong, elegant and extremely easy to maintain. In refurbishment projects it has allowed old buildings to be given an interior appropriate to the 21st century.

The handrail, which is seen to float above a clear wall of toughened glass, may be of stainless steel, either circular or oval in section. For internal use a timber handrail can be supplied, fixed to the glass by means of a neat stainless steel channel. Alternatively, handrail from our Strading, Stronghold, Stargard or Citadel range can be side fixed to the glass.



## Glassrail Technical Sketches

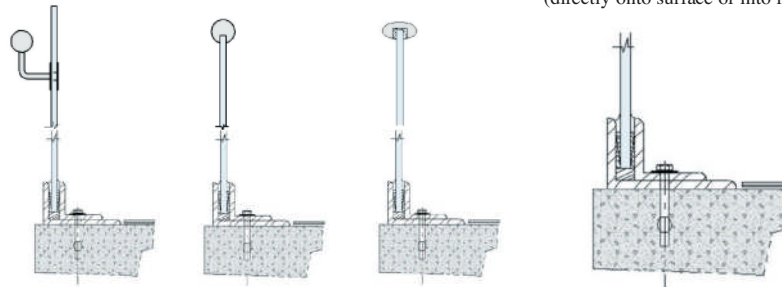
Glass panels are 12mm, 15mm, 19mm or 25mm thick depending on loading requirements

### Glassrail Clamping Plate System

#### Handrail Options

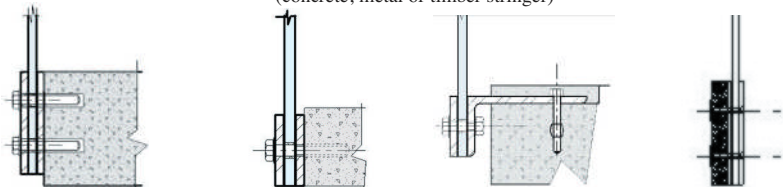
#### Floor Mounted Fixing

(directly onto surface or into recess)



#### Side or String Mounted Fixing

(concrete, metal or timber stringer)

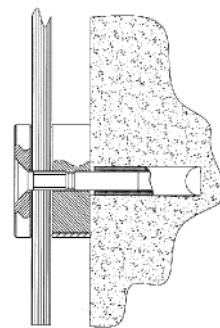


**Double Point Fixing**  
(with continuous backing plate and local patch clamping plates)

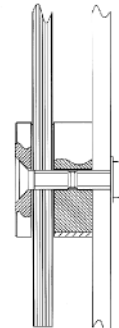
**Single Point Fixing**  
(with continuous backing plate and clamping plates)

**Double Point Fixing To Timber**

### Glassrail Clamping Disc System



Typical Fixing into Concrete Stringer



Typical Fixing into Steel Stringer

# Glassrail

CLAMPING DISC SYSTEM

## Clamping Discs

glassrail stainless steel clamping discs are suitable for internal or external applications, and can be used with 12mm, 15mm, 19mm, or 25mm thick toughened glass.

The discs are spaced to ensure an even distribution of the design load, and their diameter is either 75mm or 100mm depending on the glass thickness.

Spacer discs are placed behind the glass where appropriate to allow the glass to be positioned away from the edge of the stair, facilitating cleaning and decorating.

The lower edge of the glass can be sandblasted if required either as a feature or to hide the edge of the stair.

