

# Stargard

*The original  
"warm to the touch"  
handrail*

## Stargard offers an unbeatable blend of benefits.

It is not constrained by numerous joins as the handrail is fabricated before being sleeved with 4mm thick PVC.

One visible join per flight of stairs is our design aim.

### STRONG

The inherent strength of steel with the added benefit of impact resistance from the thick PVC.

### DURABLE

Galvanised tubular steel with 4mm thick PVC. Stargard enjoys double protection.

### EASY TO MAINTAIN

Stargard is easy to clean and virtually maintenance free.

### WARM TO THE TOUCH

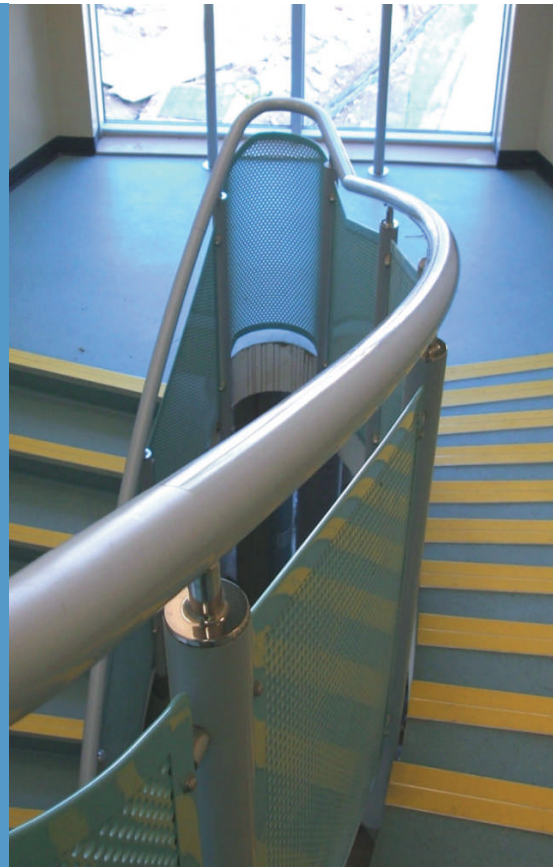
Kind to those who need it most.

### COLOURFUL

A range of standard colours is kept in stock with many more available to special order.

### DESIGNER FRIENDLY

Designers are not restricted by short lengths or standard bends



# Stargard

has bright polished stainless steel fittings

Stargard can also be used with Stronghold stainless steel balusters



## Specification of Stargard



● Handrail and balusters are fabricated from galvanised mild steel tube, which is then sleeved with the 4mm thick PVC, giving a finished diameter of either 50mm or 42mm.

● During fabrication all welds are ground smooth prior to the PVC sleeving being applied to ensure a smooth finish.

● The components (glass brackets etc.) are stainless steel grade 316 bright polished to add to the aesthetics of the product as well as being functional.

● Various infill designs are available. Toughened glass, powder coated perforated sheet, mid-rails and stainless steel wire.

● A standard range of PVC colours are held in stock, red, yellow, blue, grey, black, white, silver metallic and bronze. Other colours are available to special order.



# Stargard

DDA applications

