

Stargard

The original “warm to the touch” handrail offers an unbeatable blend of benefits

- * **Comfortable to grip**
42mm or 50mm diameter handrail
- * **Warm to the touch**
4mm (4,000 microns) thick PVC sleeving
Stargard is generally 4 - 5 degrees Centigrade warmer than powder coated steel of the same size and colour (Important at low temperatures)
- * **Robust**
Galvanised tubular steel core.
(generally 3-4 metres between visible joints)
- * **The PVC sleeving is applied after fabrication** (all welds are ground smooth). It resists knocks and bumps, and does not “chip”.
- * **A range of colours**
Black, white, grey, blue, green, yellow, red and metallic silver are held in stock. Other colours to order (minimum quantities apply)
- * **Baluster Options:**
Balusters can be pvc sleeved, powder coated, galvanised steel, or stainless steel. **Stargard** can also be fitted to **Glassrail** structural glass

Design: **Stargard** handrail meets the requirements of BS 8300 and building regs part M and requires the minimum of maintenance



Glazed **Stargard** with “double” handrail and glass infill panels



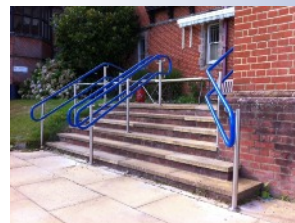
Stargard with perforated sheet infill panels

Typical **Stargard** ramp balustrade

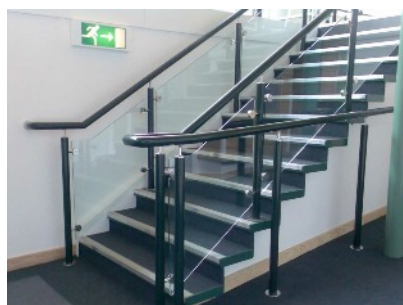


Stargard balustrade to an underpass

Stargard handrail on to **Sentinel** stainless steel balusters



Stargard with stainless steel “Running rails”



Stargard with clear glass infill panels



January 2015



4 mm (4,000 microns) thick PVC over galvanised steel tube



Stargard Standard colours

DATA SHEET

www.handrailsuk.co.uk

SG System Products Limited
22 Wharfedale Road
Ipswich
IP1 4JP

Tel: 01473 240055
Fax: 01473 461616
Email: sales@sgsystems.co.uk