

Sentinel

A component based stainless steel system,
tailored to suit the clients specific requirements.



July 2015

DATA SHEET

www.handrailsuk.co.uk

The Product (material)

Stainless steel grade 304 for interior and
grade 316 for exterior applications.

The surface finish

can be either fine satin, bright polished, powder coated or a combination of polished and powder coated.

Handrail

is either 42 mm or 48 mm diameter, or, "warm to the touch" (Stargard range), or Timber (Coppice range) which can be with or without stainless steel bends etc.

Balusters

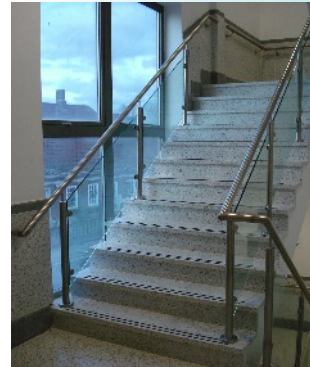
48 mm diameter or "flat" baluster design in stainless steel with a range of base fixings (Pocket, baseplate or side fixing).

Infill panels

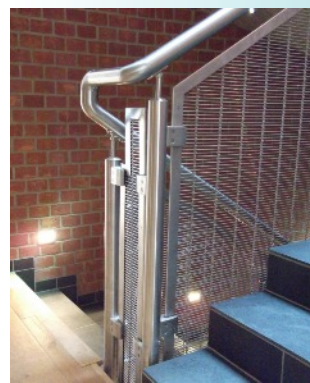
are available in glass, perforated or woven metal, stainless steel wire, "running rails" or vertical bar infill.

Applications:

Main staircases to access ramps,
Juliette balconies to full balconies, public, commercial or private developments.
They are all suitable for Sentinel



Glazed balustrade



Woven metal infill panels

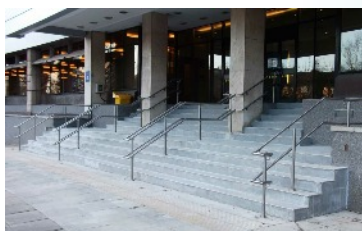


"Warm to the touch" handrail on to stainless steel balusters

Juliette Balcony



"Running Rails"



Entrance balustrade

SG System Products Limited
Unit 22
Wharfedale Road
Ipswich
IP1 4JP

Tel: 01473 240055
Fax: 01473 461616
Email: sales@sgsystems.co.uk